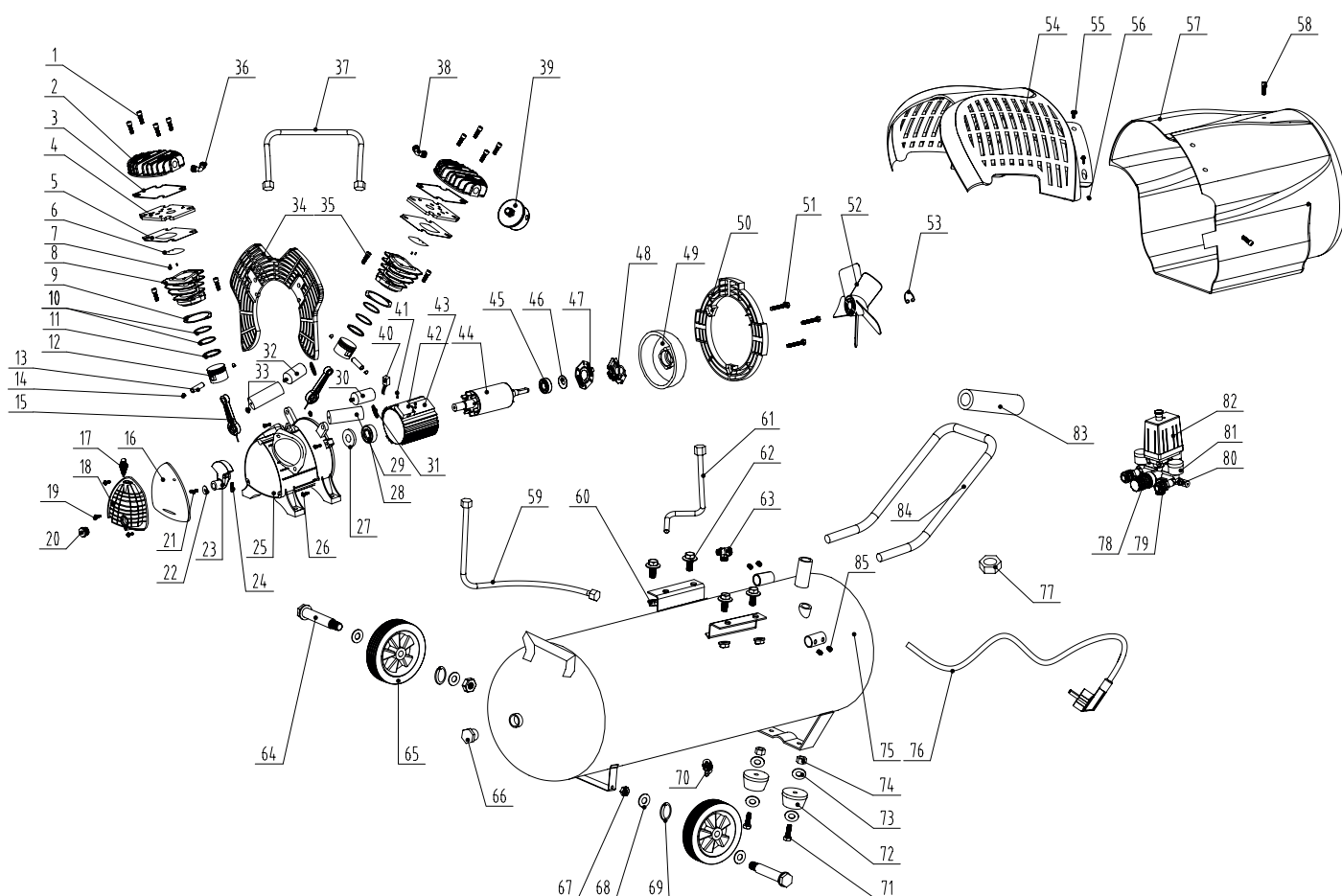


# TECHNICAL DRAWING

## HL 425-100V

REF. NO.: 36834



**TECHNICAL DRAWING**  
**HL 425-100V**

REF. NO.: 36834

NO.	Designation	Qty
1	BoltM6x55	8
2	Cylinder head	2
3	Cylinder seals	2
4	Valve plate	2
5	Valve plate gasket	2
6	Valve clack	2
7	Sell the son	4
8	Cylinder	2
9	Cylinder gasket	2
10	Piston ring	4
11	Oil wreath	2
12	Piston	2
13	Piston pin	2
14	Circlip	4
15	Conncting rod	2
16	Rubber gasket	1
17	Respirator	1
18	Crank case cover	1
19	Bolt M6x16	3
20	Oil leveler	1
21	Bolt M8x20 left	1
22	Flat gasket Ø8	1
23	Crank	1
24	Bolt M8x30	1
25	Crank case	1
26	Bolt M6x30	3
27	Sealing ring	1
28	Brearing 6205	1
29	Start the electric capacity	1
30	Capacitor cover before	2
31	Capacitor cover after	2
32	Revolve the electric capacity	1
33	Nut M8	2
34	Prop up the plank	1
35	Bolt M8x25	4
36	Direct shipping links	1
37	Connect the connector	1
38	Curved head of right angle	1
39	Eliminate the sound machine	2
40	Protection(built-in)	1
41	Bolt M5x8	2
42	Junction Box	1
43	Stator	1

NO.	Designation	Qty
44	Rotor	1
45	Brearing 6205	1
46	Wave washer D35	1
47	Leave the heart switch scaleboard	1
48	Leave the heart switch	1
49	The electrical engineering cover	1
50	Lead the breeze cover blocks the plank	1
51	Bolt M6x30	3
52	Fan	1
53	Block the turn 14	1
54	Lead the breeze cover	1
55	Bolt M5x12	5
56	Nut M5	5
57	Fan cover	1
58	From offend the bolt ST4.8x16	5
59	The high pressure tube	1
60	Nut M8	4
61	Unload the lotus tube	1
62	The outside is hexangular bolt M8x25	4
63	One-way valve	1
64	Axle	2
65	Wheel	2
66	Block up the head	2
67	Nut M10	2
68	Flat gasket Ø10	4
69	Spring washer	2
70	The catchment fill	1
71	Bolt M8x25	2
72	Rubber mat	2
73	Flat gasket Ø10	4
74	Defend the loose nut M8	2
75	Tank 50L	1
76	Plug line	1
77	Combine the tight nut	1
78	The support is total to become	1
79	Quickly change to deal with contact	2
80	Safe valve	1
81	Pressure gauge 40	2
82	Pressure switch	1
83	Rubber hand handle	1
84	The handle	1
85	The handle screws	4